

SUPERIOR CLEANING



**Ergonomic
design**



**Low water
consumption**



**Large
opening**



**Low electricity
consumption**

FEATURES

- ✓ Rigid mounted, normal spin, 100 G
- ✓ Stainless steel top panel, anthracite grey front and side panels
- ✓ Stainless steel drum and tub
- ✓ Basic control – easy to use microprocessor
- ✓ Patented soap hopper
- ✓ Large drain valve (Ø76mm)
- ✓ Easy access to all vital parts from the front
- ✓ Large door opening for easy loading and unloading



OPTIONS

- Professional control – fully programmable
- Coin-operated timer (CPS)
- Stainless steel front and side panels
- USB plug (on the back panel)
- Liquid Soap Print – liquid soap connection
- Liquid soap pumps
- Water recovery kit
- Steam heating version
- Drain pump (LS80)
- 175 G-factor execution
- 7 mm drum holes
- Automatic door opening in case of power failure

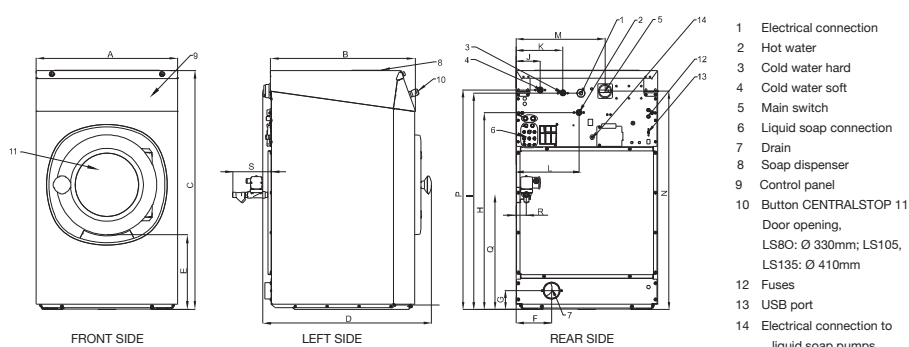


SUPERIOR CLEANING

DIMENSIONS & SPECIFICATIONS

INNER DRUM	Max. capacity 1:9	kg 12
	Capacity 1:10	kg 11
	Volume	litres 105
	Diameter	mm 620
DRUM SPEED	Wash speed	rpm 46
	Extraction speed	rpm 540 (100G) – 645 (175G)
	G-factor speed	100 (optional 175)
HEATING	Electricity (standard)	kW 9
	Steam	bar 1-8
	Hot water	°C 90
	Sound pressure level	dB (A) <65
	Water valves connection	BSP ¾"
	Water pressure	kPa 100-800
	Rec. water pressure	kPa 300-500
	Water inlet	litres/min. 20
	Drain valve (outer Ø)	mm 76
	Flow amount with drain valve	litres/min. 210
	Steam valve connection	BSP ½"
	Steam pressure	kPa 100-800
DIMENSIONS	Size HxWxD	mm 1225x750x785
	Net weight	kg 170
TRANSPORT DATA	Bruto weight	kg 185
	Packing dimensions HxWxD	mm 1355x800x835

Standard = Standard version.



	A	B	C	D	E	F	G	H	I	J	K	L	M	N	P	Q	R	S
LS80	660	785	1115	676	349	166	88	920	1010	113	218	293	415	1020	1025	535	48	180
LS105	750	785	1225	676	342	225	98	1030	1120	113	218	338	505	1130	1135	480	42	192
LS135	750	900	1225	788	342	225	98	1030	1120	113	218	338	505	1130	1135	480	42	192
	width	depth	height															

